

Please provide the paper in pdf-format and word-format

Title of paper (Use 14 pt Arial bold)

First Author¹, Second Author², Third Author³

¹ Address of first author, including affiliation, country and email address

² Same for second author

³ Same for subsequent authors

ABSTRACT

All pictures, tables, and figures should be embedded in the text and centred. Top and bottom margins are 2.5 cm, right margin is 2 cm, and the left margin is 2.5 cm.

Do not include page numbers, they will be added later.

Do not include headers and footers.

Paper could be up to ten pages long (including references).

Abstract should be between 200 to 300 words.

INTRODUCTION

All manuscripts should be in English.

Metric units (SI) should be used.

Important instruction:

- **Line spacing** 'exactly 15 pt' for all text
- **All text** also in graphics and tables 12pt Time New Roman
Please follow this instruction because the text and graphics will be scaled down.

FORMAT OF THE TEXT

All text styles are set in this document, **body text** is 12 point Time New Roman. Main section **headings are bold**, centred, and capitalised. **Second level headings** are left justified, bold, italics, and lower case. Third level headings are left-justified, bold, lower case, underlined.

A Second Level Heading

This is a second level heading.

A third level heading

This is a third level heading.

Page numbers

Do not include page numbers, they will be added later.

Tables

These should be included in the text. A descriptive title should be given above the table in 12 pt. An example is given below (Table 1).

Table 1: Results of test

Specimen	Length [m]	Width [m]	Height [m]	Weight [kg]
1 ^a	1	1	1	1
3 ^b	3	3	3	3
4	4	4	4	4

^aBirch, ^bCorsican pine

Figures

Figures should be referred to in text as Fig. 1, or as (Fig. 1).

Times New Roman 12 pt. bold for the figure captions.

Figures should be embedded in the text.

Example:

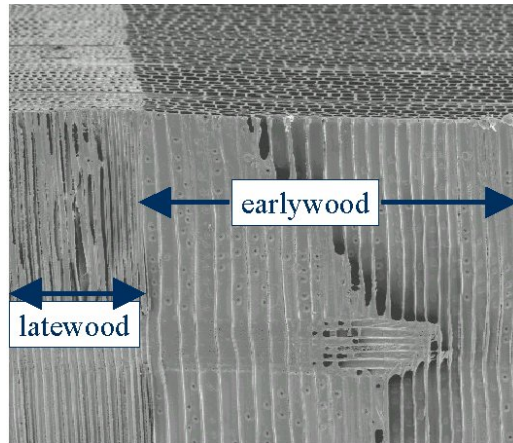


Figure 1: Scanning electron micrograph of a softwood

Equations

Equations should be referred to in the text as Eq. 1 (or Eq. 1).

The equations should be numbered sequentially, with the number in brackets on the right hand side of the page.

Example:

$$a^2 = b^2 + c^2 \quad (1)$$

References

All references should contain enough information to allow a reader to find the cited materials. Do not abbreviate journal titles. Cite references in the text using the author's last name and date of publication as follows (Murphy 1990, Jones and Smith 1989, Davis *et al.* 1999). List the citations at the end of the manuscript in alphabetical order (examples given below).

REFERENCES

Ross, R.J., DeGroot, R.C. and Nelson W.J. (1994) Technique for the non-destructive evaluation of biologically degraded wood. *Experimental Techniques*, **18**(5), 29-32.

Clausen, C.A., Green III, F. and Highley, T.L. (1991) Early detection of brown-rot in southern yellow pine using monoclonal antibodies. In: *Proceedings of the 8th International Biodeterioration and Biodegradation Symposium*, ed. H.W. Rossmore. Windsor, Ontario, pp. 412-414. Elsevier Applied Science, New York.